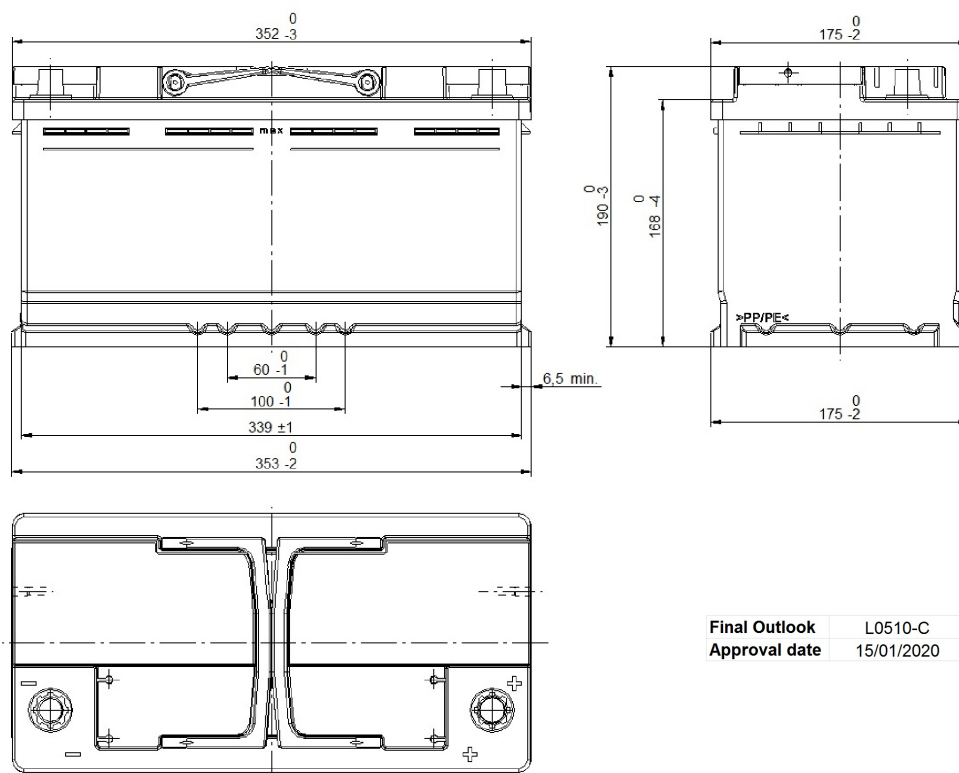


Central Article Code: L05097C10-C

Created: 25/07/2019

Local Code: EL1000

Modified: 25/07/2019



PERFORMANCES

Voltage (V):	12 V	
C20 (Ah):	100.0	20 h
Cranking (A):	900	EN
Charge:	WET	
Technology:	Vented/Flooded	
Grid:	Ca/Ca	

STD. DIMENSIONS

Length (mm ± 2):	353
Width (mm ± 2):	175
Height (mm ± 2):	190
Total Weight (kg ± 5%):	26.00

All figures show nominal values. Tolerances are according to EN50342 and applicable European Regulations.

CONTAINER

Type:	L05	BLACK
Hold Down:	B13	
H.D. Adapter:	No	

COVER

Type:	Double with Inte	BLACK
Polarity:	ETN 0	
Terminals:	EN taper post	
Terminal Adapter:	No	
SOCI:	No	
Ventilation:	Central	
Filter:	2 Filters	
Lateral Plug:	Standard	Right side BLACK shape

PLUGS

Type:	1 x Vent Seale	BLACK
-------	----------------	-------

HANDLES

Type:	2 x PSL OE Integrate	BLACK
-------	----------------------	-------

OTHERS

Degassing Tube:	No
-----------------	----