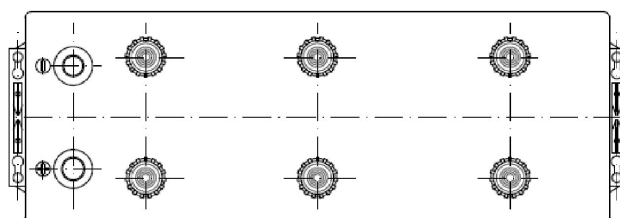
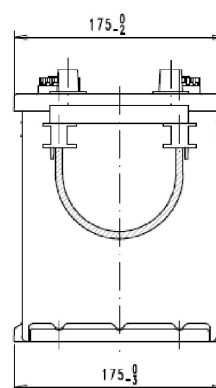
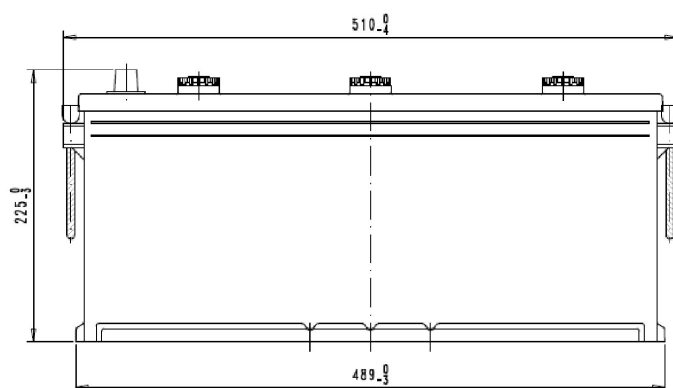


Central Article Code: D08068C01-A

Local Code: EG1206

Created: 16/10/2012

Modified: 20/12/2018



Final Outlook	D0801-A
Approval date	15/05/2010

PERFORMANCES

Voltage (V):	12 V	
C20 (Ah):	120.0	20 h
Cranking (A):	680	EN
Charge:	WET	
Technology:	Vented/Flooded	
Grid:	Ca/Ca	

CONTAINER

Type:	D08	BLACK
Hold Down:	B3	
H.D. Adapter:	No	

COVER

Type:	Flat/Screw	BLACK
Polarity:	ETN 4	
Terminals:	EN taper post	
Terminal Adapter:	No	
SOCI:	No	
Ventilation:	Independent	
Filter:	No	
Lateral Plug:	No	

STD. DIMENSIONS

Length (mm ± 2):	510
Width (mm ± 2):	175
Height (mm ± 2):	225
Total Weight (kg ± 5%):	31.80

PLUGS

Type:	6 x M27	BLACK
-------	---------	-------

HANDLES

Type:	2 x Rope (Rigid holde	BLACK
-------	-----------------------	-------

OTHERS

Degassing Tube:	No
-----------------	----

All figures show nominal values. Tolerances are according to EN50342 and applicable European Regulations.