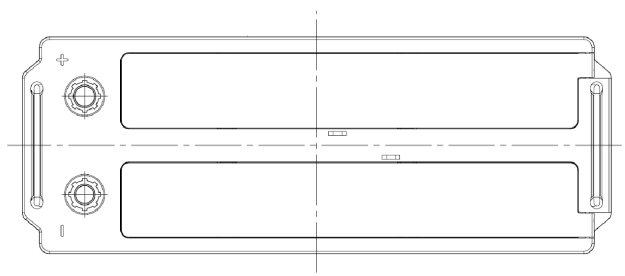
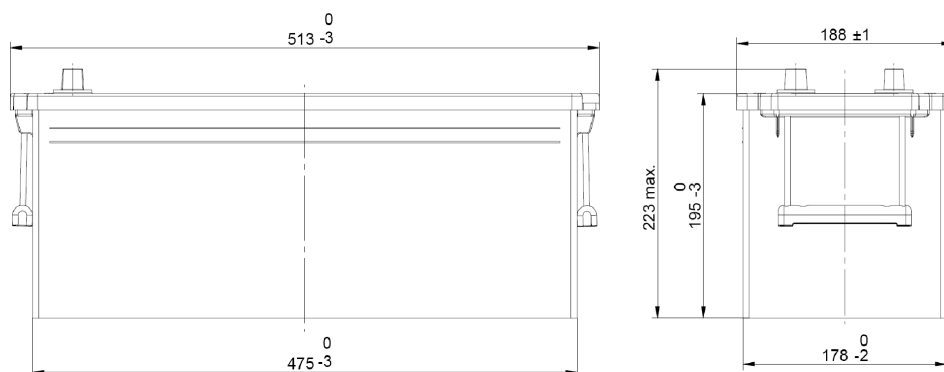


Central Article Code: D04090C19-A

Created: 16/05/2012

Local Code: EF1453

Modified: 20/12/2018



Final Outlook	D0419-A
Approval date	15/05/2012

## PERFORMANCES

Voltage (V): 12 V  
 C20 (Ah): 145.0 20 h  
 Cranking (A): 900 EN  
 Charge: WET  
 Technology: Vented/Flooded  
 Grid: Ca/Ca

## STD. DIMENSIONS

Length (mm ± 2): 513  
 Width (mm ± 2): 189  
 Height (mm ± 2): 223  
 Total Weight (kg ± 5%): 35.80

All figures show nominal values. Tolerances are according to EN50342 and applicable European Regulations.

## CONTAINER

Type: D04 GREY MEDIUM  
 Hold Down: B0  
 H.D. Adapter: No

## COVER

Type: Flat/Press GREY MEDIUM  
 Polarity: ETN 3  
 Terminals: EN taper post  
 Terminal Adapter: No  
 SOCI: No  
 Ventilation: Central  
 Filter: 1 Filter per Vent  
 Lateral Plug: No

## PLUGS

Type: 2 x VCL Vent GREY MEDIUM

## HANDLES

Type: 2 x Rope (Rigid holde BLACK

## OTHERS

Degassing Tube: No